



1980

FRANKOMA POTTERY

Why Frankoma-?

THE FRANKOMA STORY

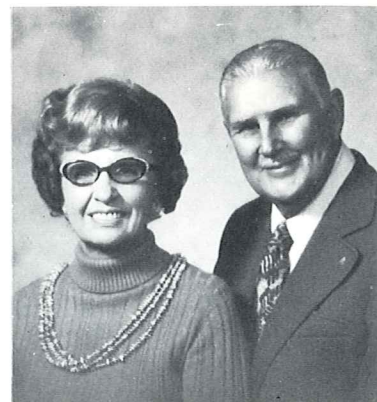
FRANKOMA POTTERY has rightfully earned its position as America's outstanding creators of "useful and beautiful" earthenware. The colors, textures and crafted designs are created at Frankoma, and are unique in American ceramics. Frankoma entered the field of ceramics in 1933, utilizing the heritage left it by its predecessors, the Southwest Indians. Our aim was to combine the traditional art of the Indians, the spirit of the American Pioneer and the creative tendencies of the youth of the Great Southwest, and mold them into good pottery forms.

John Frank, originator of "Frankoma," came to Oklahoma from Chicago in 1927. His teaching Art and Pottery at the University of Oklahoma and his work with the geological survey—unearthing the Oklahoma clay deposits—brought together valuable material for his future venture of "potting." In 1933 he started a "studio" pottery in Norman, Oklahoma, —equipped with one small kiln, a butter churn for mixing clay, a fruit jar for grinding glazes and a few other crude tools and tables. It was necessary to continue teaching until enough ware was produced to prove that a product could be made of Oklahoma clays that was a contribution to Art and Ceramics and still salable. Resigning his teaching in 1936 he and his wife, Grace Lee, working side by side, set out on a venture of creating beautiful pottery for every day living. They felt the need of using Oklahoma clays for Oklahoma's first pottery. First a clay from Ada was used, then in 1954 a red burning clay dug at Sapulpa became the basis for all Frankoma ware. In 1938 the "studio" grew into a small factory as it moved from Norman to Sapulpa, where it is now. (Original plant 5,500 square feet; through the years it has grown to the existing 79,000 square feet.)

Frankoma demanded of itself to make as fine a pottery as could be made considering the limitations of its materials. This means constant research to take advantage of raw materials and processes as they are brought to light.

Pottery enjoys so many advantages over the more "refined" and delicate ceramic wares. Frankoma Pottery is manufactured by its unique once-fired process—clay body and colored glaze are fused and fired at the maturing point of the clay, and tempered as it slowly cools. It can be used "indoors—outdoors" because of its ruggedness and durability. It can really "take" the handling of every day use. It can be used in a dishwasher. It is also ovenproof and food can be served in the same dish in which it is baked or prepared. It also keeps foods and drinks hot much longer. Color is such an indispensable part of today's decor, and Frankoma creates an exciting wide range of colors and textures. Our "Rutile Art Glazes" which have identified Frankoma's unique tableware around the world have successfully been produced only on our colored earthenware clay. The first to introduce colored dinnerware on the market in the 1940's was one of the basic reasons John Frank was presented the award "1972 Marketing Man of the Year."

Grace Lee and The Late John Frank exemplify true American determination and the Free Enterprise System. They started with only a dream, and through hard work created one of America's most unique potteries recognized the world over. 1971 they were named, "National Small Businessman of the Year" and personally recognized by the President of the United States for their accomplishments. The business has continued since Mr. Frank's death, November 10, 1973, in the same tradition by their daughter Joniece Frank and a trained, dedicated staff.



Grace Lee and The Late John Frank (pictured January 1973)

"If art is good, it will live" was a statement made by John Frank, which has been proven many times over. One piece has been produced since the first studio pottery 47 years ago; others almost as long and still remains in demand. Yet Frankoma Pottery constantly creates new designs. Frankoma is versatile. Bake beans in a flower pot or arrange flowers in a gravy boat. What fun you can have by serving salad in a cornucopia. Your imagination creates its use.

Frankoma with its modern plant and latest equipment has been able to maintain its very popular price range in the face of higher materials, taxes and labor costs, and the influx of foreign goods; yet it maintains the original concept that made it accepted as a standard of fine "Pottery"—every piece should be both useful and beautiful and be a contribution to both art and ceramics. "Frankoma" which includes its Frankoma Family of Employees and Accounts, and the family of John Frank will continue to do just that, so that every piece will add to your daily pleasure of casual living.



"CLAY IN THE MASTER'S HANDS"

The STORY of John Frank and Frankoma Pottery.

PRICE — \$6.95

The story of John Frank and the legend he became comes to life in the newly published book, released in November, 1977.

Affectionately told by his eldest daughter, Donna Frank, "Clay In The Master's Hands" is both profound and humorous. It translates the beginning of a dream through joys, sorrows, near discouragement, and tells of the faith that made it all come true. From a poor boyhood in the slums of Chicago, he rose to become one of America's most loved humanists, and in 1971 was honored by the President of the United States as "Outstanding Small Businessman in America."

This book is a warm and loving introduction to Frankoma Pottery and to John Frank for those who did not know him—the artist, the Christian, the humanitarian, the man. If you knew him you will relive each moment of this moving story.

FRANKOMA

CHRISTMAS MEMORIAL PLATES

AMERICA'S FIRST ANNUAL LIMITED EDITION CHRISTMAS PLATE SERIES



1965
"Good Will Towards Men"



1966
"Bethlehem Shepherds"



1967
"Gifts for The Christ Child"



1968
"Flight Into Egypt"



1969
"Laid in a Manger"



1980
"UNTO US A CHILD IS BORN"

Boxed

In 1965 The Late John Frank, Artist and Founder of Frankoma Pottery created the first annual Christmas plate made in America. They were inspired by the Christmas story and the fact that the life of Christ has been the inspiration of more "Art" in all of its mediums, than any one subject in the history of the world. A self imposed demand was that every plate should have a scriptural background for each years renderings. No other pottery to our knowledge has attempted such a religious annual commemorative plate in the history of America.

They are done in low bas-relief, with sharp enough detail, and sufficient good modeling as to make each plate a treasured piece of **sculpture**, as well as tell a story relative to Christmas time and the life of Christ. They are done in a semi-translucent "Della Robbia" white glaze. The plate is 8½ inches in diameter; the master mold was signed by Mr. Frank through 1973. Beginning in 1974 the master mold is signed by his daughter Joniece Frank; all plates are copyrighted. The production is limited to those that are actually sold up till about the 10th of December. The master mold is destroyed on Christmas eve, and there are none made after that. The edition is limited to that year.

These plates are introduced in early spring and only sold through Frankoma Pottery dealers, for it was created as a bonus for their participation and selling Frankoma Pottery. We have tried to keep the price very reasonable so that more people can afford to own them, collect and enjoy them.

We hope they will be a spiritual inspiration and reminder of the lasting value of the scriptures, and a blessing to all those who possess them.

PAST ISSUES NO LONGER AVAILABLE FROM FACTORY



1970
"King of Kings"



1971
"No Room in the Inn"



1972
"Seeking The Christ Child"



1973
"The Annunciation"



1974
"She Loved and Cared"



1979
"The Star of Hope"



1978
"All Nature Rejoiced"



1977
"Birth of Eternal Life"



1976
"The Gift of Love"



1975
"Peace on Earth"



"THE GRACE MADONNA" ©
© F.P. 1977



"MADONNA OF LOVE" ©
© F.P. 1978 Items are Boxed

CREATIONS BY GRACE LEE

Grace Lee Frank Smith known for her artistic talents in poetry, floral designs and possibly best known for her inspiration and guidance of her late husband—John Frank—in his design and artwork of Frankoma Pottery: now enters the field of design and sculpture as an artist in her own right.



GRACE LEE

The Madonna has been a favorite subject of artists throughout the centuries. In the "Madonna Plates" one can see The Simplicity of the Western Plains Heritage of the artist, together with the refined beautiful influence of the great Renaissance.

"MADONNA OF LOVE" and "THE GRACE MADONNA" are signed by the artist, NUMBERED IN ROMAN NUMERALS, Limited Edition Plates. They are presented to you in the unique Hand Stained Rubbed Bisque Finish. 8½" Plate, Foot drilled for hanging.



108—MOTHER BIRD



109—BABY BIRD

BIRDS — AVAILABLE IN ALL COLORS

"TEEN-AGERS OF THE BIBLE"

Teen-Ager
Plate is Boxed

Photo
not available
at this printing

1980

"RUTH THE DEVOTED"

ONE OF THE MOST UNIQUE "COLLECTABLE PLATES" PRODUCED IN ANY COUNTRY TODAY. Not in 2,000 years since Christ have "teen-agers" of the Bible as such been featured in either Art or Literature to our knowledge. — Until we started this series of plates.

We produce one plate each year, featuring different teen-agers, for ten years. The mold is destroyed Christmas eve. The plate is 7" in diameter: color — Desert Gold: Foot drilled for hanging: The master mold is signed by the artist; Mr. Frank signed the first one. Beginning in 1974, the master mold is signed by his daughter, Joniece Frank, and copyrighted.

The Late Mr. Frank loved teen-agers and young people and through his interest in them did he conceive this idea. It will prove to be one of the greatest collector items ever produced. A great gift for young people and a treasure for all ages.

PAST ISSUES NO LONGER AVAILABLE FROM FACTORY.



1973

"Jesus The Carpenter"



1974

"David The Musician"



1975

"Jonathan The Archer"



1976

"Dorcas The Seamstress"



1977

"Peter The Fisherman"



1978

"Martha The Homemaker"



1979

"Daniel The Courageous"



TERRA COTTA

Terra Cotta has the feel and color of Frankoma's unique Red Clay. Coffee Brown inside assures you of problem-free containers. The clay outside is sealed to give a texture that will enhance any arrangement of fresh flowers, dried, silk, or polyethelene. Containers are terrific in Terra Cotta.

Items shown on pages 6-8-9 are all available in this unique finish except as indicated on page 9.

Terra Cotta is suggested for floral containers, not as serving pieces.

Appropriate Containers for Flower Arrangements and Planters



31-6" BUD VASE



20-6" BUD VASE



38-6" OCTANGLE VASE



28-6 1/2" BUD VASE



43-8" BUD VASE



26LC-4 1/2"-6 OZ.
TUMBLER VASE



35-4x6" FOOTED PLANTER



T7-3 1/2" COCONUT PLANTER



B3-4 1/2" CORK BARK PLANTER



F33-3 3/4x7" FLUTED PLANTER



4M-4 1/2"-18 OZ.
MUG



5M-5 1/2"-16 OZ.
MUG



M2-6"-18 OZ.
MUG



23A-6" SQ. PEDESTALLED
VASE



F52-7" PEDESTALLED
URN



37-4" HEXAGONAL PLANTER



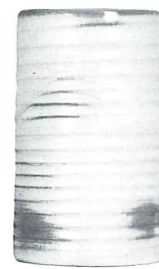
65-6 1/2" HEXAGONAL
VASE



64-9 1/2" OCTAGONAL
VASE



272-4" RINGED
CYLINDER VASE



172-6 1/2" RINGED
CYLINDER VASE



72-10" RINGED CYLINDER
VASE

THIS PAGE AVAILABLE IN ALL COLORS — ADD 50% FOR FLAME.

SEE PAGE #27 FOR COLOR CHART.

SIZES ARE PROPORTIONATE BUT MAY VARY SLIGHTLY.

NEW ITEMS FOR 1980



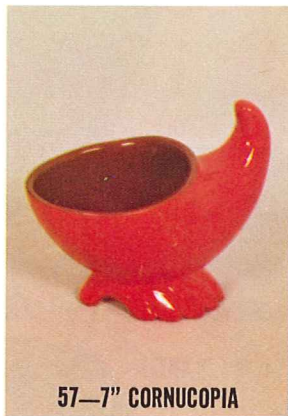
W5—7" OWL WIND BELL W2—5" WIND BELL LARGE W1—3½" WIND BELL SMALL
814—6" TABLE BELL 815—7" TABLE BELL



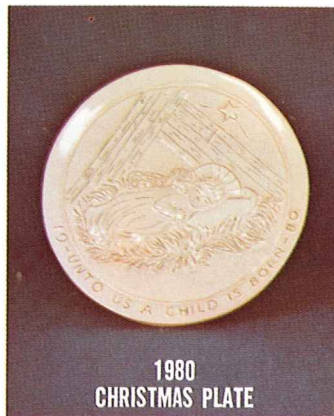
243—BONE DISH
244—INDIVIDUAL VEGETABLE BOWL
242 CORN DISH
X0—3 OZ. SINGLE SERVING BOWL



OTR OWL TRIVET



57—7" CORNUCOPIA



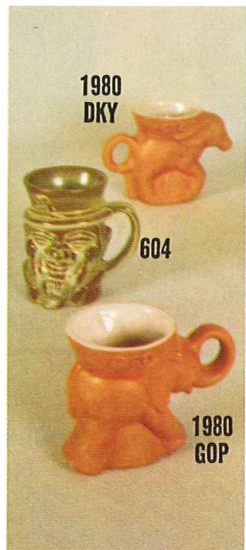
1980 CHRISTMAS PLATE



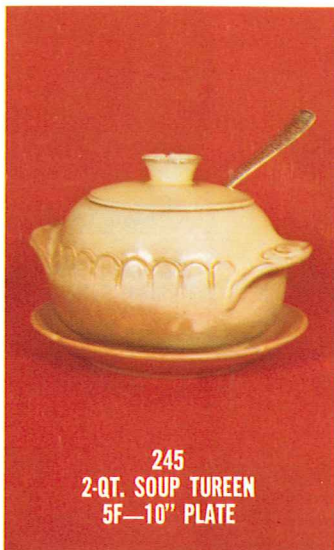
272—4" RINGED CYLINDER VASE
54 SHELL VASE 198 FAN VASE
473 SHELL BOWL 402 DOG BOWL



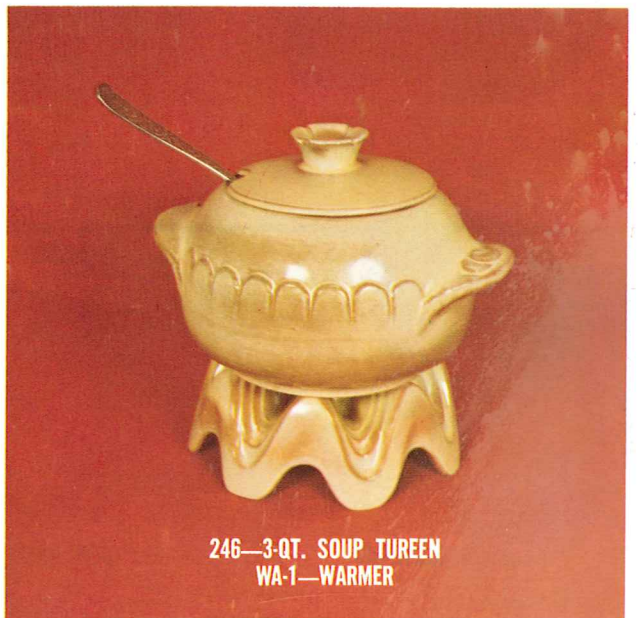
118 C/T 9" TRAGEDY — 7½" COMEDY



1980 DKY
604
1980 GOP



245 2-QT. SOUP TUREEN 5F—10" PLATE



246—3-QT. SOUP TUREEN WA-1—WARMER

1980 CHRISTMAS PLATE AVAILABLE IN WHITE ONLY
1980 ELEPHANT & DONKEY MUGS IN TERRA COTTA ONLY
#604 IRISH MUG IN GREEN, GOLD, WHITE & FLAME ONLY

Appropriate Containers for Flower Arrangements and Planters



4N—8" BOWL



212—8" ROUND BOWL



4XL—7" BOWL



6N—7½" BOWL



224—8" ROUND BOWL



4SC—5" CUP-BOWL



201—9" BOWL



22A—5" FOOTED VASE



22—7" FOOTED ROUND VASE



218—12" SCALLOPED BOWL



235—6" FLOWER ARRANGER



F29—6" DRAPERY VASE



234—7½" FREEFORM BOWL



14—8" PLANTER



17—8 x 3" PLANTER



913—9" DUTCH SHOE PLANTER



228—8" SWAN PLANTER



208A—9½" MALLARD PLANTER



208—12" MALLARD PLANTER



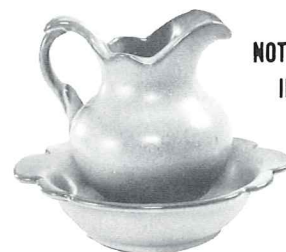
433—BOOT BOOKENDS



133—6½" BOOT VASE



134—4" BOOT



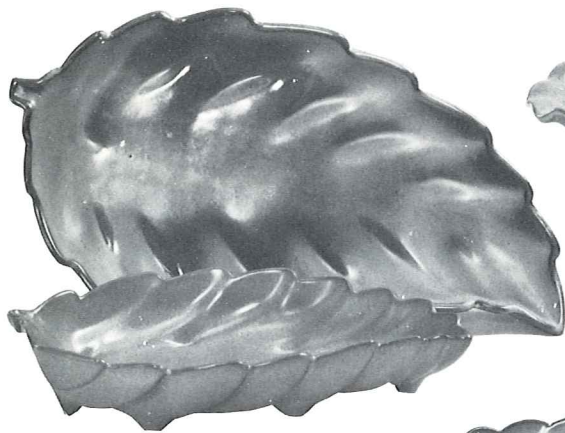
F30AB—PITCHER & BOWL SET
F30A—5½" PITCHER
F30B—7" BOWL

NOT AVAILABLE
IN FLAME



40AB—PITCHER & BOWL SET
40A—4" PITCHER
40B—5" BOWL

SEE PAGE #27 FOR COLOR CHART



227—17" LEAF TRAY

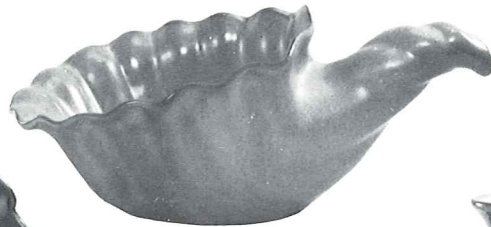
226—11" LEAF TRAY

Not Available in Flame



225—7" LEAF TRAY

225—226—227 — Not Available in Terra Cotta.



222—12" CORNUCOPIA



71—10" LEAF HANDLED VASE



57—7" CORNUCOPIA



302—6" CANDLE VASE.



A10—10" JARDINIERE

Not Available in Flame



A8—8½" JARDINIERE

Not Available in Flame



A7—7" JARDINIERE



A6—6" JARDINIERE



70—8½" RINGED JARDINIERE
Not Available in Flame



70-A—7" RINGED JARDINIERE



70-B—5½" RINGED
JARDINIERE



52—8" URN

HONEY JUGS — SYRUP PITCHERS — FLOWER CONTAINERS



803—Honey Jar
W/LID



838—10 Oz. Pitcher



831—16 Oz. Pitcher



833—24 Oz. Pitcher



835—24 Oz. Pitcher



8—24 Oz. Pitcher

HONEY JUGS Not Available in Terra Cotta.

Accessories for All Dinner Ware Patterns

"MUGS" for coffee, tea, milk, chocolate, soup, soda. YOU NAME IT! Available in all colors (see page #27 for color chart) — 8 to 11 Oz.



C1



C2



C3



C4



C5



C6



C7



C9



C10



C12



C13

MUGS boxed 4 to a box
* * * * *
Available in ALL colors

Road Runner Mug

Colors:
Green,
Gold,
White,
Flame;
ONLY.



C1R



INDIVIDUAL — MINIATURE — SUGAR & CREAMERS

553—Creamer
504—Sugar



1A—CREAMER
1B—SUGAR



1T—TOOTHPICK
HOLDER



1C—3 Oz.



5CC—5 Oz.



26DC—3 Oz.

DEMITASSE CUPS FOR COFFEE, TEA AND JUICE



4SC—11 Oz. Soup Cup



M2—18 Oz. Stein



4Y—6" SPOON HOLDER



6J—2 Cup Teapot



6T—6 Cup Teapot



5LC—6 Oz.
Juice



5L—12 Oz.
Tumbler



26LC—6 Oz.
Tumbler



26D—1 Qt. Pitcher



81—1 Qt. Pitcher



80—2 Qt. Pitcher

Accessories for All Dinner Ware Patterns

"TOBY MUGS"

CREATED FOR THE COLLECTOR OR THE EVERY DAY USER, THESE MUGS ARE A REAL CONVERSATION ITEM. EACH YEAR A NEW ONE IS DESIGNED, COPYRIGHTED AND DATED. THE PAST YEARS ARE STILL AVAILABLE BUT ARE NOT DATED.



604
IRISH MUG
Dated 1980



603—GOLF PLAYER MUG



600—UNCLE SAM MUG 601—COWBOY MUG 602—BASEBALL PLAYER

Available in Green, Gold, White & Flame Only

6" Felted Trivets — Hot Plates



BTR—Butterfly



94TR—Rooster



3TR—Spanish Iron



OTR—Owl

Available in all Colors



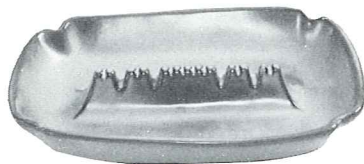
OK3—5 Civilized Tribes Trivet



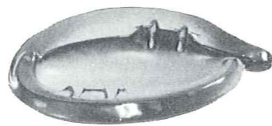
7TR—Cherokee Alphabet

Available only in Gold, Green, White & Flame

ASH TRAYS AND ACCESSORIES



489—10" Ash Tray with Safety Rest



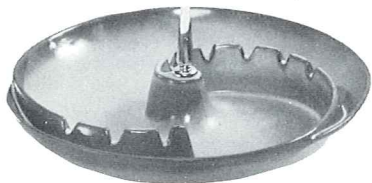
452—7" FREEFORM



453—7" ARROWHEAD



469—4 1/2" SAFETY ASH TRAY



30—10" ROUND ASH TRAY



490—7" SAFETY ASH TRAY W/CORK CENTER FOR PIPES



458—7" THREE SIDED



474—4" ROUND ASH TRAY



59—CANTEEN W/HANGER



513—4" Clover



477—4" Dogwood



463—4" Arrowhead



512—4" Leaf

MINIATURES:
APPROPRIATE FOR PIN
TRAYS: NUT CUPS: ASH
TRAYS: etc.



170—TURTLE PAPER WEIGHT

SIZES ARE PROPORTIONATE BUT MAY VARY SLIGHTLY

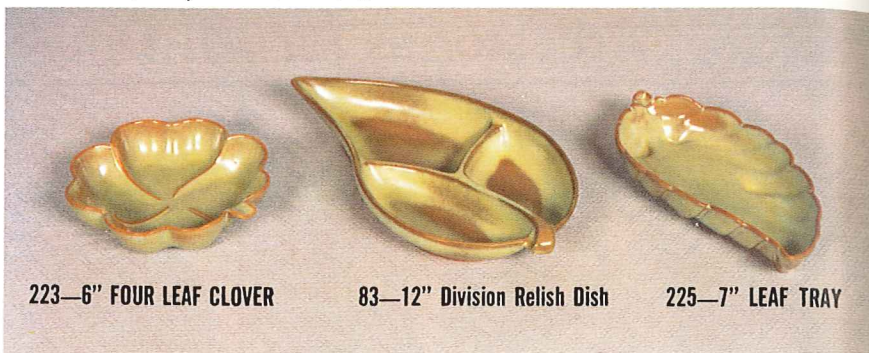
ABOVE ITEMS AVAILABLE IN ALL COLORS — ADD 50% FOR FLAME



T9
7" SHELL BOWL

204A—DOGWOOD TRAY

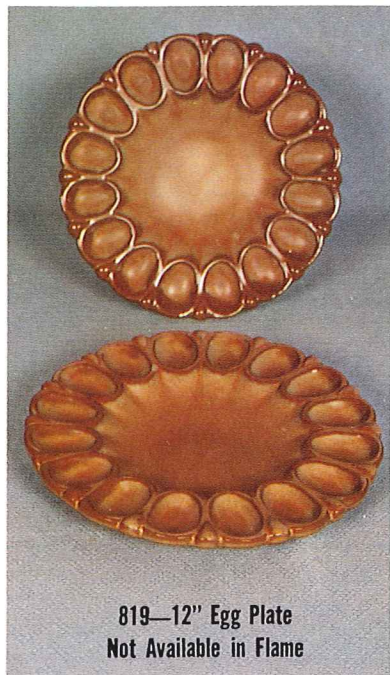
473—6½" SHELL TRAY



223—6" FOUR LEAF CLOVER

83—12" Division Relish Dish

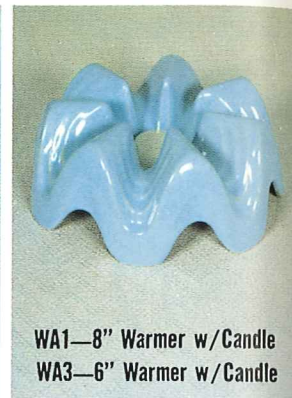
225—7" LEAF TRAY



819—12" Egg Plate
Not Available in Flame



T10—12" SHELL BOWL
T9—7" SHELL BOWL
(Center piece or Salad set)

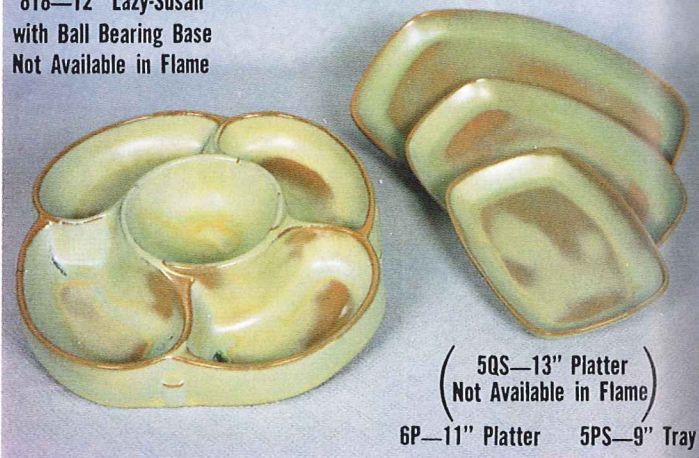


WA1—8" Warmer w/Candle
WA3—6" Warmer w/Candle



6J—2 CUP TEAPOT (shown with)
312—HOLDER (and) 1C—3 oz. CUP

818—12" Lazy-Susan
with Ball Bearing Base
Not Available in Flame



5QS—13" Platter
(Not Available in Flame)
6P—11" Platter 5PS—9" Tray

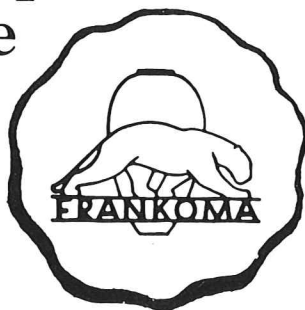
fine ceramic sculpture for today's home

REPRODUCTIONS OF WILLARD STONE'S
WOOD CARVINGS

These pieces available

ONLY in:

Rubbed Bisque



Today's homes are "confines around our treasures", no matter what they "cost". Only a few can afford the "originals" of masters, but even the meagerest of homes are entitled to be enriched by living with good reproductions of them. All of the originals of the items we reproduce, are owned by Frankoma.

The wood sculpture of **WILLARD STONE**, a Cherokee, is a part of most museums, especially of the Southwest. His unique down to earth and humanistic style has brought him into many of the leading art galleries in America. We try to faithfully reproduce the few we are privileged to own.

MARE AND COLT — #103
12" Tall

SQUIRREL — #105
6" Tall

COYOTE — #102
12½" Tall

INDIAN MAIDEN — #101
12" Tall





80 SET

80—2 QT. PITCHER 5L—12 OZ. TUMBLER

C12—7 OZ. MUG



82 SET (82—6 CUP CARAFE & LID 82W—WARMER)

Gift Sets



6T—6 CUP TEAPOT
WA3—6" WARMER W/CANDLE

5DA—6 OZ. CREAMER
5DB—6 OZ. SUGAR



5D SET

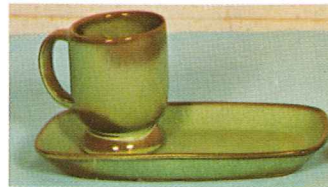
5D—3 QT. PITCHER 5M—16 OZ. MUG



6S—TWO-SPOUT GRAVY
5PS—9" PLATTER-TRAY



SOUP AND SANDWICH SET
4SC—11 OZ. SOUP CUP
6P—11" PLATTER-TRAY



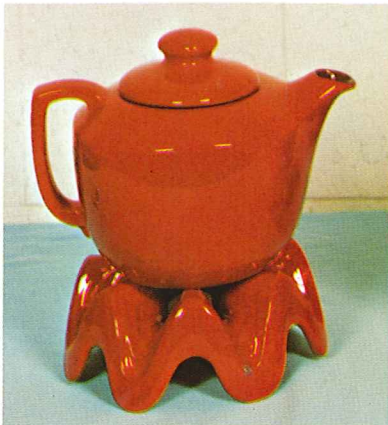
COFFEE AND DESSERT SET
5PS—9" PLATTER-TRAY
C2—10 OZ. MUG
(or choose your own style
Mug — See Pg. 10)



6J SET

6J—2 CUP TEAPOT
504—INDIVIDUAL SUGAR
553—INDIVIDUAL CREAM
6P—11" PLATTER TRAY

6S/ST—TWO-SPOUT GRAVY/W TRAY



5TL/W—TEAPOT & WARMER SET
5TL—12-CUP TEAPOT WA1—WARMER



26 SET—
RINGED CANNISTER SET

26F—FLOUR, COOKIES, CORN MEAL

26S—SUGAR

26C—COFFEE

26T—TEA



26G—SUGAR/GREASE 26H—SALT & PEPPER
4-PIECE SET/BOXED



26DC SET

26D—1 QT. PITCHER 26DC—3 OZ. JUICE
91—TRAY



5LC SET

81—1 QT. PITCHER 5LC—6 OZ. JUICE
91—TRAY

GOURMET ITEMS



4V—2 QT. BAKER/BEAN POT
4V/W—BAKER/W WARMER SET

4Y

4W—3 QT. BAKER/BEAN POT
4W/W—BAKER/W WARMER SET



6U
18 OZ. BAKER

6VS—1½ QT. BAKER
6VS/W BAKER & WARMER SET

6V—2½ QT. BAKER
6V/W BAKER & WARMER SET

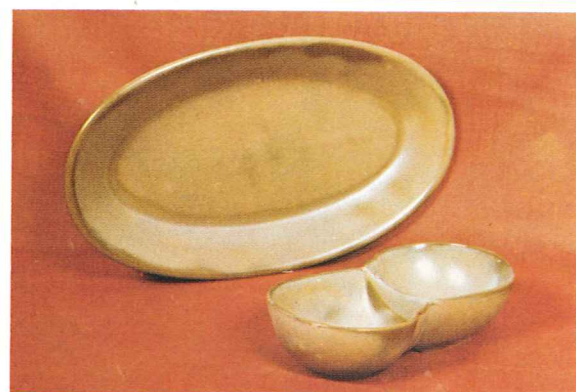


5P—

(5P—17" PLATTER NOT AVAILABLE IN FLAME)
5Q—13" PLATTER 5QD—13" DIVIDED BOWL



172—WITHOUT SPOONS



TP—17" OVAL PLATTER

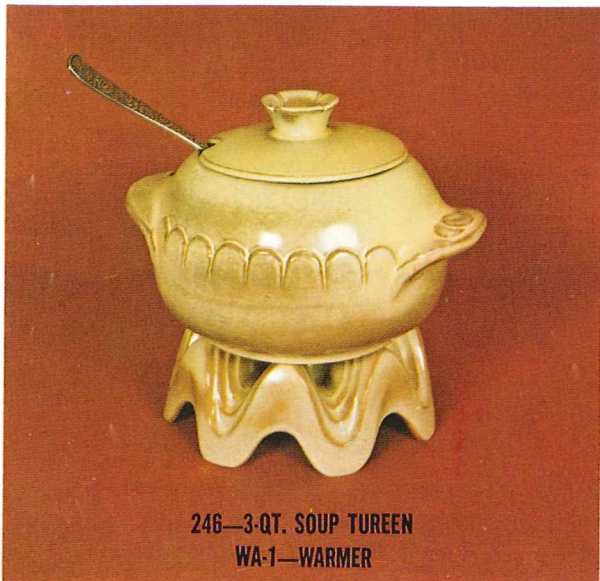
4QD—11" DIVIDED BOWL



81—WITHOUT SPOONS



6N—1 QT. BOWL 4N—24 OZ. VEGETABLE 224—8" ROUND BOWL



246—3-QT. SOUP TUREEN
WA-1—WARMER



245
2-QT. SOUP TUREEN
5F—10" PLATE



243—BONE DISH

244
INDIVIDUAL
VEG. BOWL

242
CORN DISH

XO—3 OZ. BOWL

Westwind PATTERN

AVAILABLE IN: Robin Egg Blue, Prairie Green, Autumn Yellow and White Sand:
Black & White; Flame & White.



White Sand



Autumn Yellow



Prairie Green



Flame & White



Black & White



Robin Egg Blue

6LS-45 PC. SERVICE SET FOR EIGHT, BOXED

- *8 - Cups
- 8 - Saucers
- *8 - 14 Oz. Bowls
- 8 - 7" Plates
- 8 - 10" Plates
- 1 - 13" Platter
- *1 - Creamer
- *1 - Sugar
- *1 - Sugar Lid
- *1 - Serving Bowl

6TS-20 PC. STARTER SET FOR FOUR, BOXED

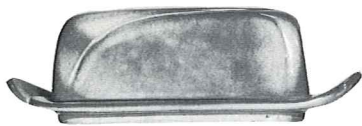
- *4 - Cups
- 4 - Saucers
- 4 - 7" B & B Plates
- 4 - 10" Plates
- *4 - 14 oz. Chili-Soup Bowls

Set your table with these lovely color combinations: Black and White or Flame and White. They create new exciting table decor without being repetitious. The standard sets come with cup, bowl, sugar and creamer, serving bowl in black or flame (as depicted with asterisk*) and dinner plate, salad plate, saucer, platter in white. Use your own creative imagination when ordering other accessory pieces. Truly a new concept in eating fun. "Westwind", with its basic simple lines, permits freedom in expression of personality which is so important in smart contemporary homes. You'll LOVE "Westwind" - and, of course, it is all ovenproof and dish-washer proof.

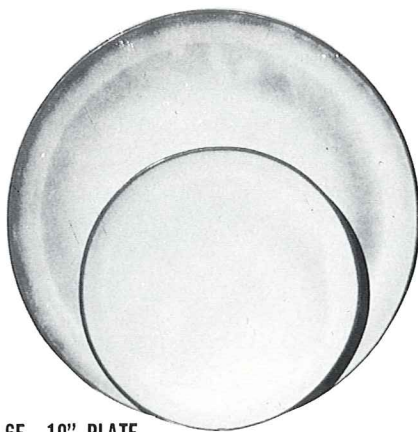
SIMPLICITY in its truest form - that's "Westwind." The carefully broken line of the shallow coupe shape is the key to the pattern. The simple unbroken line of the cup handle, with its broad thumb rest, combines grace and security.

The large and small open bakers have rolled rims for safety and ease of handling. Cleaning is no task. Much care is exercised in making these "easy-grip" knobs on the lids. This oven-to-table pottery is truly the gourmet's delight.

The homemaker today appreciates the warm, cordial earthen colors in this unique pottery. Its waxy textures are so lovely to the touch. Such tableware should be selected for its artistic qualities as well as its serviceability. "Westwind," with its basic simple lines, permits freedom in expression of personality which is so important in smart contemporary homes. You'll LOVE "Westwind"-and, of course, it can be used in the microwave, oven and dishwasher.



*4K—BUTTER DISH



6F—10" PLATE

6G—7" PLATE



*6B—SUGAR WITH LID



*6A—9 OZ. CREAMER



*6V—2½ QT. BAKER
6V/W BAKER & WARMER SET



* *6C—CUP

6E—5" WELLED SAUCER



*6H—SALT & PEPPER



*5LC—6 OZ. JUICE



*5L—12 OZ.
TUMBLER



*6VS—1½ QT. BAKER
6VS/W BAKER & WARMER SET



*6T—6 CUP TEAPOT



*81—1 QT. PITCHER



*80—2 QT. PITCHER



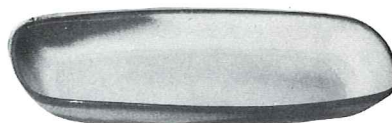
*6J—2 CUP TEAPOT



*6S—2 SPOUT GRAVY



*6U—18 OZ. BAKER FOR TWO
A COVERED CANDY DISH



5QS—13" STEAK PLATE (SHALLOW PLATTER)

*6P—11" STEAK PLATE

*5PS—9" TRAY



*BP—6 OZ. BEAN POT
OR CUSTARD

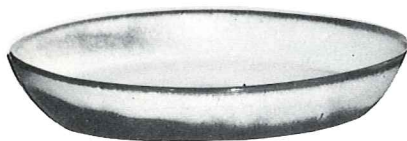


*XO—3 OZ.
SINGLE SERVING
BOWL



* *6X—14 OZ. CHILI SOUP

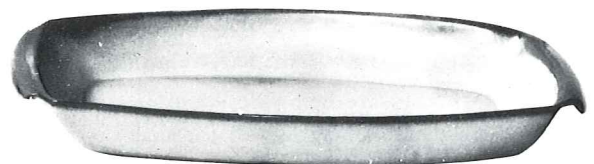
* *6XS—10 OZ. FRUIT



*91—10" BAKING DISH

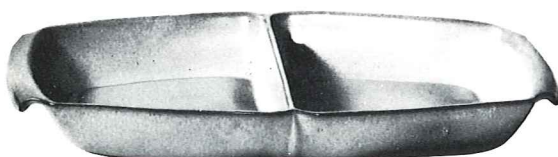


*6N—1 QT. BOWL

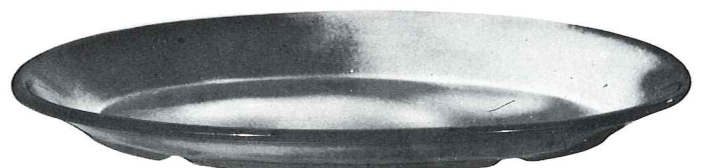


5P—17" DEEP PLATTER

*5Q—13" DEEP PLATTER



*5QD—13" DIVIDED BOWL



*TP—17" OVAL PLATTER

THIS PAGE AVAILABLE IN PRAIRIE GREEN, ROBIN EGG BLUE, AUTUMN YELLOW AND WHITE SAND EXCEPT WHERE NOTED

*AVAILABLE IN ALL COLORS **AVAILABLE IN BLACK & FLAME ALSO. — ADD 50% FOR FLAME

SIZES ARE APPROXIMATE AND MAY VARY SLIGHTLY.

LAZYBONES Pattern

AVAILABLE IN: Brown Satin, Desert Gold, Prairie Green, Robin Egg Blue



BROWN SATIN



DESERT GOLD



PRAIRIE GREEN



ROBIN EGG BLUE

4LS-45 PC. SERVICE SET FOR EIGHT, BOXED

- | | |
|----------------|----------------|
| 8—Cups | 1—13" Platter |
| 8—Saucers | 1—Creamer |
| 8—14 Oz. Bowls | 1—Sugar |
| 8—7" Plates | 1—Sugar Lid |
| 8—10" Plates | 1—Serving Bowl |

Our American homes are being designed and built so that home makers can take advantage of the many modern conveniences, yet develop their own personalities in color and styling.

The furnishings for these contemporary homes are practical and simplified. They must be selected carefully to preserve a cordial atmosphere, which we all wish for our family and friends.

Frankoma was sensitive to these trends when this new dinnerware was being designed. The atmosphere surrounding LAZYBONES is relaxing, for you are influenced by its free flowing sculptured lines. As you accept the invitation to handle and caress each piece, you will love the way

4TS-20 PC. STARTER SET FOR FOUR, BOXED

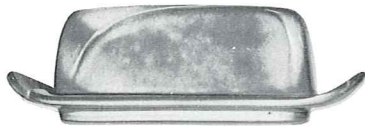
- | |
|---------------------------|
| 4—Cups |
| 4—Saucers |
| 4—7" B & B Plates |
| 4—10" Plates |
| 4—14 Oz. Chili-Soup Bowls |

they fit the contour of your hands, for immediately they become a part of you.

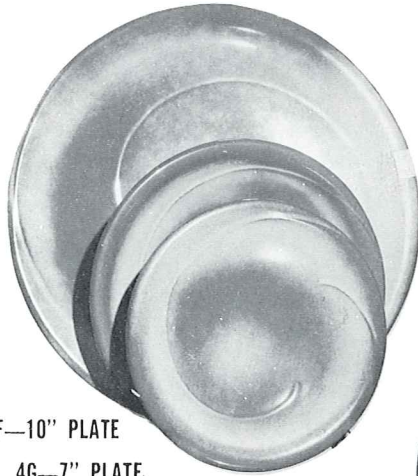
Food cooked in Lazybones can go from the oven to the table—and there are so many uses for each piece. They are designed to serve!

Notice the array of Frankoma's colors. They are the gourmet's delight, for they all compliment your food and share in making every meal an occasion. The shapes themselves are both practical and beautiful.

When you set your table with Lazybones, you are set to relax, and enjoy your share of casual living. It will be the "Talk of the Table" with your family and friends.



*4K—BUTTER DISH



4F—10" PLATE

4G—7" PLATE

4E—5" SAUCER



*5CC—5 OZ. TEACUP



*4X—14 OZ. CEREAL



*5L—12 OZ. TUMBLER



*5LC—6 OZ. JUICE



4C—CUP



*4Y—6" SPOON HOLDER



*4H—SALT & PEPPER



4A—8 OZ. CREAMER



4B—SUGAR WITH LID



*4M—18 OZ. MUG



*243—BONE DISH—6 1/2"



*4V—2 QT. BAKER/BEAN POT
*4V/W—BAKER/W WARMER SET

4AB—CREAM & SUGAR SET



*4N—24 OZ. VEGETABLE



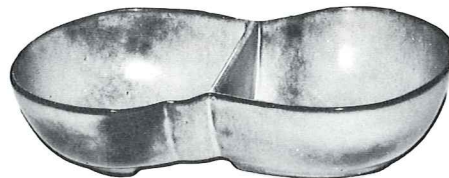
*4P—13" PLATTER



*224—8" ROUND BOWL



*4W—3 QT. BAKER/BEAN POT
*4W/W—BAKER/W WARMER SET



*4QD—11" DIVIDED BOWL



*201—9" BOWL



*BP—6 OZ. BEAN POT OR CUSTARD



*M2—18 OZ. STEIN



*4D—2 QT. PITCHER



*4SC—11 OZ. SOUP CUP



*4XL—24 OZ. SALAD OR GUMBO

THIS PAGE AVAILABLE IN PRAIRIE GREEN, DESERT GOLD, BROWN SATIN AND ROBIN EGG BLUE, EXCEPT WHERE NOTED*

*AVAILABLE IN ALL COLORS — ADD 50% FOR FLAME

SIZES ARE APPROXIMATE AND MAY VARY SLIGHTLY.

WAGON WHEELS Pattern

AVAILABLE IN: Desert Gold and Prairie Green.



PRAIRIE GREEN

94LS—45 PC. SERVICE SET FOR EIGHT, BOXED

- | | |
|----------------|----------------|
| 8 -Cups | 1—13" Platter |
| 8 -Saucers | 1—Creamer |
| 8—14 Oz. Bowls | 1—Sugar |
| 8—7" Plates | 1—Sugar Lid |
| 8—10" Plates | 1—Serving Bowl |



DESERT GOLD

94TS—20 PC. STARTER SET FOR FOUR, BOXED

- | |
|---------------------------|
| 4—Cups |
| 4—Saucers |
| 4—7" B & B Plates |
| 4—10" Plates |
| 4—14 Oz. Chili-Soup Bowls |

THE ROMANCE OF THE WEST lives on with our WAGON WHEEL Pottery! The pitchers are quaint and practical. The cup is the hub of a wheel, and the "good luck" horseshoe makes the handles for the baker. There are bands of cattle brands on the platters and bowls. The whole set is an application of the fine designs one can find on any ranch.

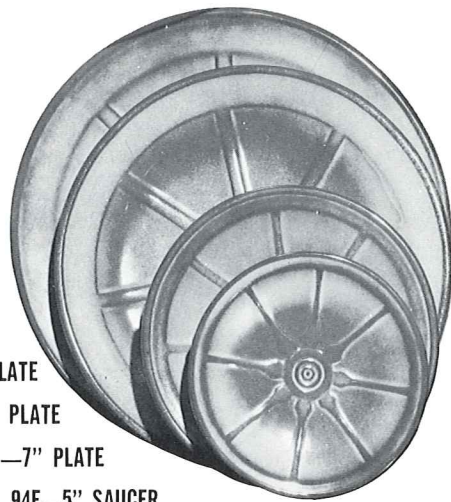
A most colorful part of the history of the Southwest is the cattle industry, and the rancher's "coat of arms" is his "cattle-brand." The covered wagon, "wagon wheels," horses, the cowboys, cattle, the "little dogies," and above all, the "cattle-brand" are symbols of this natural industry.

Many of these brands are fine designs, and most of them have a definite meaning. Some are the initials of the owner, others may refer to hills on the ranch, the number of acres he owns, the number in the family, his monogram, key, a hat, or any one of a thousand items of interest. Each brand is usually registered in the county in which it is used.

We are proud to take this opportunity to eulogize these pioneers of the Southwest, and include a number of these brands in decorating some of the pieces of our WAGON WHEEL set. Every piece can be used in the microwave, oven and dishwasher.



167—3½" MINIATURE HORSESHOE



94FL—10" PLATE

94F—9" PLATE

94G—7" PLATE

94E—5" SAUCER



94H—SALT & PEPPER



94M—16 OZ. MUG



94XL—20 OZ. BOWL



94V—2 QT. BAKER/BEAN POT
94V/W—BAKER W/WARMER SET



94B—SUGAR WITH LID



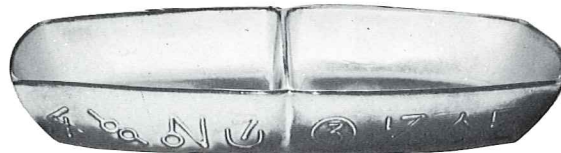
94A—8 OZ. CREAMER
94AB—CREAM & SUGAR SET



94C—5 OZ. CUP



94X—14 OZ. CEREAL



94QD—13" DIVIDED BOWL



94L—12 OZ. TUMBLER



94XO—6 OZ. DESSERT



94W—3 QT BAKER/BEAN POT
94W/W—BAKER/W WARMER SET



94Q—13" PLATTER



94N—1 QT. VEGETABLE BOWL



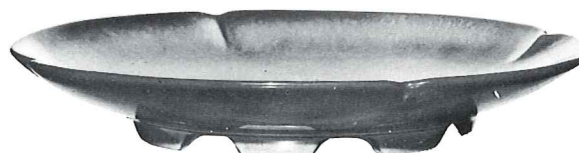
94P—17" PLATTER



94J—2 CUP TEAPOT



94D—2 QT. PITCHER



5FC—15" CHOP PLATE

Plainsman Pattern

AVAILABLE IN: Autumn Yellow, Desert Gold, Brown Satin and Prairie Green.



DESERT GOLD



PRAIRIE GREEN



AUTUMN YELLOW



BROWN SATIN

5LS-45 PC. SERVICE SET FOR EIGHT, BOXED

- | | |
|----------------|----------------|
| 8-Cups | 1-13" Platter |
| 8-Saucers | 1-Creamer |
| 8-14 Oz. Bowls | 1-Sugar |
| 8-7" Plates | 1-Sugar Lid |
| 8-10" Plates | 1-Serving Bowl |

For thousands of years men have gloried in creating "atmosphere" around their favorite sport—eating. Harmonious and beautiful surroundings not only add to the pleasure of eating but make it a healthier pastime. We still lavish all we possibly can on our banquets and feasts, for we love to eat.

Men have always managed to devise some sort of receptacle to hold food, either raw or prepared, and the quality and value of his utensils depend more on his love of beauty and ability to create than the size of his purse. Of the many materials used throughout the centuries, in all countries of the world — iron, copper, brass, stone, wood, silver, and even gold, ceramics has remained the favorite of all eating vessels. Since the acceptance of "whiteware" in the sixteenth century, most fine tables have been set with "dinner ware" or "china." This is sometimes a white earthenware, or a compounded china body, or even a

5TS-20 PC. STARTER SET FOR FOUR, BOXED

- | |
|---------------------------|
| 4-Cups |
| 4-Saucers |
| 4-7" B & B Plates |
| 4-10" Plates |
| 4-14 Oz. Chili-Soup Bowls |

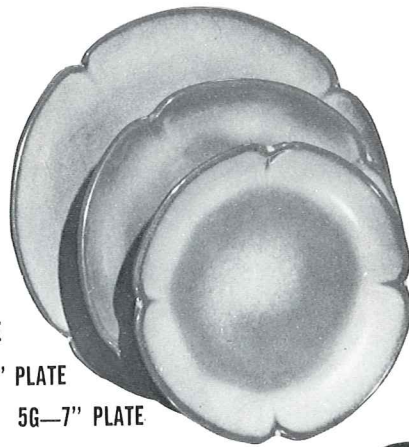
translucent true porcelain. Its quality depends on the selection and handling of the materials plus its Art value expressed in line, form and color.

Today, from the crudest earthenware to the finest porcelain, we still choose CERAMICS of some kind for our table. Although we would not eliminate "whitewares," we love our modern pottery tableware. Why not? It is gay, happy, and colorful, and surely fits into our modern mode of living. It is with this in mind that we have created FRANKOMA TABLEWARE.

For one design we have gone to the Great Plains of the Southwest and offer you the "PLAINSMAN" pattern. Its well chosen, simple lines and sturdy shapes create an atmosphere benefitting its heritage. It is most appropriate "for fun or fashion." Every piece can be used in the microwave, oven and dishwasher.



*5V—2 QT. BAKER/BEAN POT
*5V/W—BAKER/W WARMER SET



5F—10" PLATE
5FS—9" PLATE
5G—7" PLATE



*5M—16 OZ. MUG

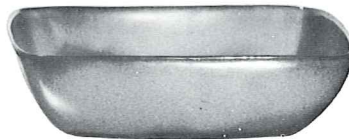
*5AB—CREAM & SUGAR SET



*5A—12 OZ. CREAMER



*5W—3 QT. BAKER/BEAN POT
*5W/W—BAKER/W WARMER SET



*5NS—9" VEGETABLE



*5CC—5 OZ. TEACUP



5C—CUP
5E—5½" SAUCER



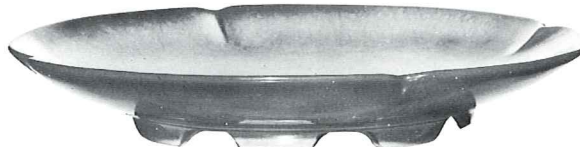
*5B—SUGAR WITH LID



*5H—SALT & PEPPER



*5N—4½" QT. BOWL



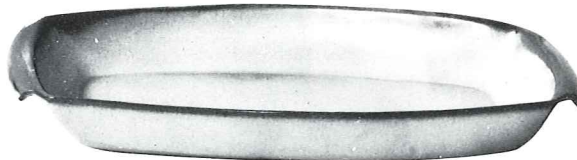
5FC—15" CHOP PLATE



*5LC—6 OZ. JUICE



*5L—12 OZ. TUMBLER



5P—17" PLATTER

*5Q—13" PLATTER



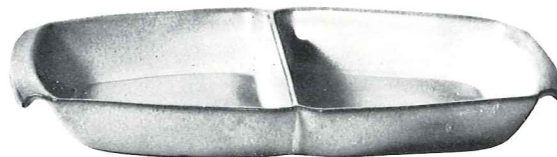
*5DB—6 OZ. SUGAR



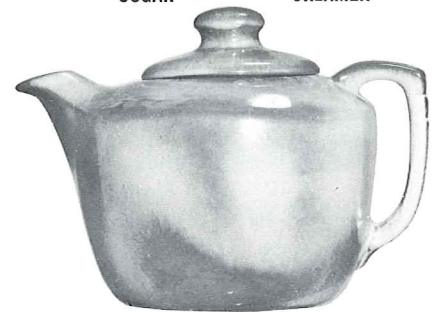
*5DA—6 OZ. CREAMER



5XL—20 OZ. BOWL
5X—14 OZ. CEREAL
5XS—9 OZ. FRUIT



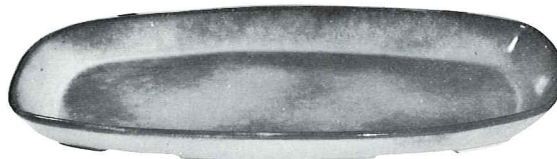
*5QD—13" DIVIDED BOWL



*5TL—12 CUP TEAPOT



*218—12" BOWL



5QS—13" PLATTER

*5PS—9" TRAY

*6P—11" PLATTER



*6S—TWO SPOUT GRAVY



*6T—6 CUP TEAPOT



*6J—2 CUP TEAPOT



5D—3 QT. PITCHER

THIS PAGE AVAILABLE IN BROWN SATIN, DESERT GOLD, PRAIRIE GREEN & AUTUMN YELLOW EXCEPT WHERE NOTED*.

*AVAILABLE IN ALL COLORS—ADD 50% FOR FLAME.

SIZES ARE APPROXIMATE AND MAY VARY SLIGHTLY.

MAYAN-AZTEC Pattern

AVAILABLE IN: Desert Gold, Prairie Green and White Sand.



DESERT GOLD



WHITE SAND



PRAIRIE GREEN

7LS-45 PC. SERVICE SET FOR EIGHT, BOXED

- | | |
|-------------------|----------------|
| 8—Cups | 1—13" Platter |
| 8—Saucers | 1—Creamer |
| 8—14 Oz. Bowls | 1—Sugar |
| 8—7" B & B Plates | 1—Sugar Lid |
| 8—10" Plates | 1—Serving Bowl |

7TS-20 PC. STARTER SET FOR FOUR, BOXED

- | |
|---------------------------|
| 4—Cups |
| 4—Saucers |
| 4—7" B & B Plates |
| 4—10" Plates |
| 4—14 Oz. Chili-Soup Bowls |

1,000 YEARS before Columbus "discovered" America, there flourished a civilization in this country whose artistic, social, and religious standards far surpassed any European peoples up to that time. Many archeologists not only compare the art and architecture of the Mayans and Aztecs favorably with that of ancient Egypt, but in many respects prefer their achievements in art importance. THESE were the FIRST Americans.

It is well established that the nucleus of American Indian tribes spread from the Great Southwest region. Our particular interest is in those who went South—the Mayans and Aztecs. They have given to the world some of its richest art treasures. The "golden age" of Mayan Art, in which they developed their pantheon, built their temples, perfected their Arts, social structure and government, occupied the first few centuries after Christ.

The Great Temple in Copan, Yucatan, built to the War Diety, was completed just before the Spanish invasion. The temple compound covered almost a quarter square mile,

comprising seventy-eight buildings — a most stupendous achievement and a monument to architectural beauty.

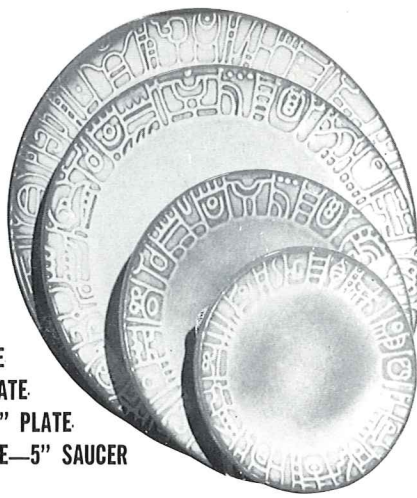
The most widely known of the Mayan and Aztec arts are the numerous hieroglyphs. They were used profusely on buildings, altars, monuments, and other such places, not only for embellishments, but for the recording of information. The decorations on the stairway of Copan alone were composed of over 2,500 different glyphs. Freehand methods prevailed entirely, for their art was their only written language.

Pottery has always evidenced every strata of culture. Fragments of pottery have been found where all other records have been destroyed, even in prehistoric times. Throughout the long history of all Indian tribes, pottery has been the universal art. The pottery of the ancient Southwestern Indians challenges comparison in color, form, and mastery of line with that of the Greek and Orientals.

It is through the inspiration of this wealth of beauty that FRANKOMA has created its Mayan-Aztec tableware.



7V-2 QT. BAKER/BEAN POT
7V/W-BAKER/W WARMER, SET



7FL-10" PLATE
7F-9" PLATE
7G-7" PLATE
7E-5" SAUCER



7D-2 QT. PITCHER



7W-3 QT. BAKER/BEAN POT
7W/W-BAKER/W WARMER, SET



7B-SUGAR
WITH LID



7A-6 OZ.
CREAMER

7AB-CREAM & SUGAR SET



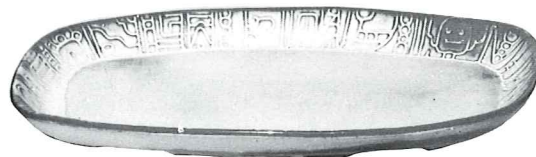
7C-CUP



7M-14 OZ. MUG



7H-SALT & PEPPER



7QS-13" STEAK PLATTER (SHALLOW PLATTER)



7XQ-8 OZ. FRUIT



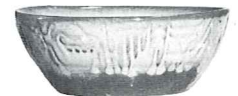
7K-BUTTER DISH



7Q-13" DEEP PLATTER



C4-12 OZ.
COFFEE MUG



7X-14 OZ. CHILI-SOUP



7PS-9" TRAY



7FC-15" CHOP PLATE



7XL-20 OZ. SALAD



7T-6 CUP TEAPOT



7TP-17" AZTEC OVAL PLATTER



7N-1 QT. VEGETABLE BOWL



7J-2 CUP TEAPOT

THIS PAGE AVAILABLE IN PRAIRIE GREEN, DESERT GOLD, AND WHITE SAND.

SIZES ARE APPROXIMATE AND MAY VARY SLIGHTLY.

FRANKOMA - An Idea Takes Shape Process of Manufacturing

Frankoma is hand crafted earthenware pottery. Frankoma is a complete pottery; we dig our own clay in Sapulpa, process it; develop and mix all our own glazes and colors; make our own molds and create our own designs.

Our pottery is formed in one of **two ways**; casting and pressing. Casting: (1) The clay is mixed with water to make a liquid clay called "slip", then poured into plaster molds. During the 45 minutes the slip sits in the mold, water is absorbed by the mold creating harder clay against the walls of the mold. The slip is then poured out, the clay the water was taken from remains, thus creating the piece. (2) After 4 more hours of drying and preparation the piece is removed from the mold to dry overnight. Pressing: (3) Because of the nature of the clay, some pieces cannot be made by casting. Therefore, we use a hydraulic press. The clay is placed between the two pieces of a mold. The top of the mold lowers up to 50 tons of pressure and forms the piece. All plates and flat pieces are made on the press.

Regardless if a piece is cast or pressed, it must be dried and then trimmed. (4) Each piece is hand trimmed. The rough edges are removed with a paring knife. (5) Then, to complete the smoothing process, the piece is wiped with a wet sponge. Frankoma is unique in that we fire our pottery only once; therefore, after the trimming, it is ready for the glaze, (glaze is the color; glaze is basically a liquid glass that melts and fuses with the clay when it is fired). The glaze is applied on the inside by "dipping". The glaze is simply poured in and then poured out, and it coats the inside. (6) Then the outside is glazed with a spray gun. The application of the glaze is very important. It must be applied just right, not too thin and not too thick. (7) The pottery is then fired for 18 hours at approximately 2,000 degrees. During the firing process the glaze melts, changes color, and becomes the piece of pottery you enjoy in your home. (8) All Frankoma's designs are original. This requires a complete well equipped mold shop with competent mold makers to effectively complete the designers ideas for production.

Because of the great demand and a desire to always maintain Frankoma as a leader in the ceramic field the plant has recently expanded to 79,000 square feet, employing 140 people who make up the Frankoma Family.

You are cordially invited to tour the plant during working hours.

COME SEE US . . .

There has been much said during the last few years about "lead poisoning" from using pottery dishes and containers. Shown here is the Official Seal of Certification, that this ware is ALL safe from lead poisoning.



• Practically all pottery wares made in the U.S. are so certified, so . . .

Buy Frankoma!
Be Safe • Buy American



(1) Slip Casting



(3) Pressing



(5) Sponging



(7) Stacking kiln for firing.



(2) Removing piece from mold.



(4) Trimming with knife.



(6) Glazing



(8) Making a Mold

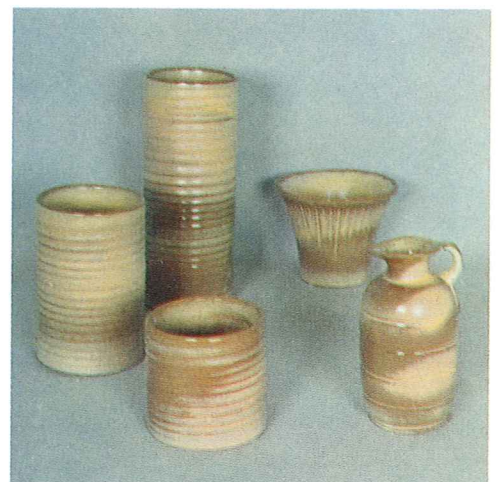
FRANKOMA COLOR CHART



BROWN SATIN



PRAIRIE GREEN



DESERT GOLD



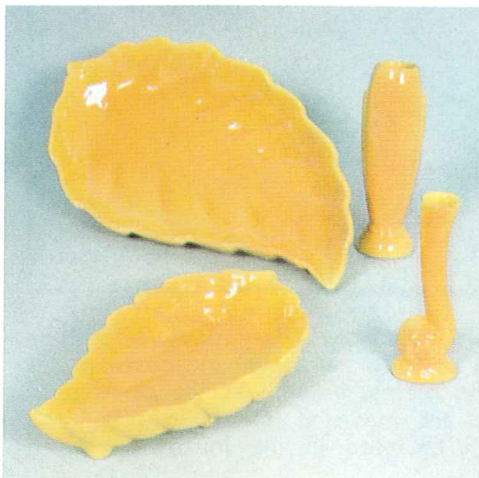
TERRA COTTA



WHITE SAND



ONYX BLACK



AUTUMN YELLOW



ROBIN EGG BLUE



FLAME

Frankoma has been 47 years developing shapes, colors, textures, glazes, types of Artware, and unique tableware, peculiar only to itself. We are CREATORS, never satisfied with the ordinary, or to just make cheaper what has already been done.

The body is unique, brick-red earthenware, basically from a local shale, combined with other earths, properly screened and aged. It is "once-fired" to about 2000° Fahrenheit, and carefully tempered when cooling to make it oven-proof, shock and chip resistant—built to "take it" in daily use.

The colors are all created and ground in our own laboratory. The color of the body is used as an undercolor for our unique two-tone effects. The rich vellum textures are lovely to touch, and are produced only by patient care in preparation and hours of proper cooling. **No one produces THESE glazes but Frankoma.** Tell your customers that—they will be delighted to know. They will be pleased that YOU know what you are talking about!

AVAILABLE IN 1980
 COLOR: TERRA COTTA
 5 OZ. COFFEE MUG



1980 ELEPHANT MUG

The original "Elephant Mug" was created for the National Republican Womens Club and copyrighted by Frankoma in 1969 and patented in 1970. The "Donkey Mug" was created in 1975 copyrighted and patented.

Now each year these mugs are produced by Frankoma as a stock item. The current mugs are only available during that year — Each year the color is different.

© F.P. 1975, U.S. Pat. No. D605,739
 © F.P. 1969, U.S. Pat. No. D214,868

AVAILABLE IN 1980
 COLOR: TERRA COTTA
 5 OZ. COFFEE MUG

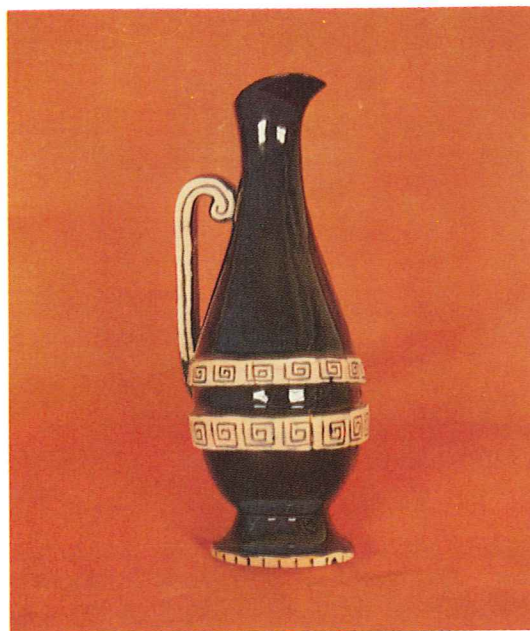


1980 DONKEY MUG

Past Issues No Longer Available From Factory



FRANKOMA POTTERY MAY BE PURCHASED FROM:



No. V-12

Pictured is the 13" LIMITED EDITION VASE, the twelfth in a series. Designed as a Grecian Vase, it will compliment any home decor and be a welcome addition to your Frankoma collection. The Vase is offered in Black with highlights of Terra Cotta in the Grecian tradition. The mold is signed by the artist — Joniece Frank. Each piece is numbered and the master mold will be destroyed after a total of only 3,000 impressions. No seconds are sold.

You can dress FRANKOMA "up or down," for it is both useful and beautiful, whatever the occasion. All the extra serving pieces, as well as the centerpiece and accessories are made to match in color and texture and can be used in the microwave, oven and dishwasher.

Frankoma is ovenproof but does not claim to be flameproof or chipproof. You will find it very durable and serviceable wherever china or pottery can be used. It is designed to be entirely satisfactory and we would appreciate letting the factory know of any deviation from this standard.

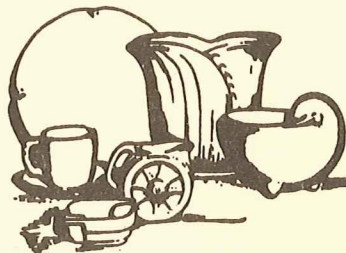
You are a welcomed guest at the factory any time. Should you come during working hours, we will be glad to conduct you through the plant to see Frankoma made.

FRANKOMA POTTERY, INC.

— On Frankoma Road —

P. O. Box 789 • 918-224-5511

Sapulpa, Oklahoma 74066



FRANKOMA POTTERY, INC.

BOX 789 · SAPULPA · OKLAHOMA

74066

(918) 224-5511

Joniece Frank • President
J. W. Daugherty • V. Pres.
J. C. Taylor • Secretary
Elizabeth Maggard • Treasurer

January 10, 1980

Dear Frankoma Customer:

We are once again pleased to present to you our new Frankoma catalog. We are sure you will find the 1980 catalog not only interesting, but **EXCITING!** As you review this issue you will find many new items enhanced by a new look and the addition of numerous pages of full color reproductions.

The additional color pages we know will be helpful to you in showing additional items which you may not stock to your retail customers.

As you will also notice, the catalog has a separate wholesale price list which has two convenient lists--one by catalog page and one by numerical order. We believe this will give you a better opportunity of using the catalog as a selling tool to your customers.

The new items will be available in our permanent show rooms and many of the temporary gift shows throughout the United States. If you have not ordered recently, we hope you will have an opportunity to visit one of our show rooms or booths, and give us the opportunity of showing you the new items for 1980, along with our new Terra Cotta color.

We have lots of new and beautiful things. TAKE A MINUTE to leisurely look through the catalog--then don't wait! Make your order out now.

FRANKOMA--ALWAYS a leader in ceramics, ideas and colors.

Sincerely,

Joniece Frank *Duane Nelson* *Wanda Morgan*

dinnerware
sculpture
artware

Joniece Frank
President

Duane Nelson - Executive
Assistant to the President

Wanda Morgan
Sales Coordinator

for those who like nice things _____

At last it's here - - - a book exclusively on Frankoma Pottery. THE COLLECTORS GUIDE TO FRANKOMA POTTERY takes you on an exciting journey with John Frank and his family. You'll travel back to 1933 to share the beginning of a dream; know the heartbreak of major setbacks such as receivership, fire and war; then emerge with them as they struggled to make Frankoma the success it is today.

You'll see the results of those successes - - - over 300 items PLUS dinnerware are professionally photographed for your enjoyment. Some of these items have never been shown in Frankoma's catalogs.

You'll learn how the pottery is made, what makes it unique and why certain designs were created. Markings and colors are shown and discussed in detail. The color cover will enhance the beauty of any Frankoma setting.

This book is 8½" X 5½", softbound, with 128 pages specially treated to insure lasting beauty. It is a perfect size for ease of handling, displaying and carrying.

There is an additional 16 page PRICE GUIDE AND SUPPLEMENT. This handy booklet is printed on heavy card stock for durability. The GUIDE contains up-to-the-minute information on Frankoma activities, a numerical listing to distinguish old items from new and price averages, with color availability, for all pieces photographed in THE COLLECTORS GUIDE TO FRANKOMA POTTERY.

Susan Cox is not affiliated with Frankoma Pottery, Inc. However, her love for this product extends back fourteen years ago when her father bought the first piece of Frankoma Susan had ever seen - - - the 1965 Christmas plate. From that moment on she was 'hooked'. She has studied and collected Frankoma since that time. Being a free-lance writer over fifteen years, coupled with her enthusiasm for antiques and collectibles, made her decision to write about Frankoma a natural one. Additional research took more than three years and now the books are complete and ready for you.

Whether you need the books for the technical information they provide or simply want them for your reading pleasure and knowledge, THE COLLECTORS GUIDE TO FRANKOMA POTTERY and the PRICE GUIDE AND SUPPLEMENT are two books you can't afford not to have. Order some for your friends and customers; they'll appreciate your thoughtfulness.

If you care to discuss Frankoma with Susan she would be happy to hear from you. You can write and also order the books directly from her:

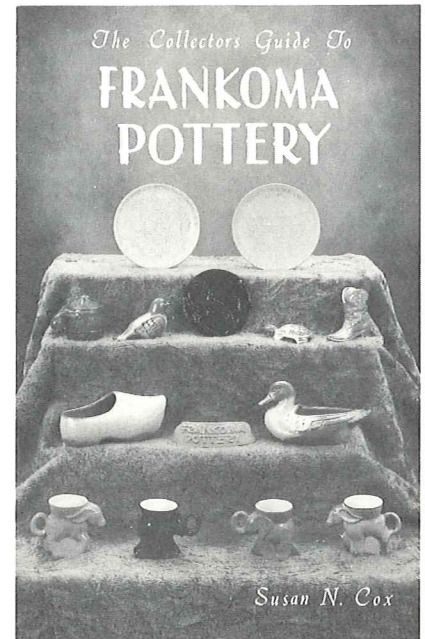
SUSAN N. COX

800 Murray Drive; El Cajon, California 92020

\$9.95 THE COLLECTORS GUIDE TO FRANKOMA POTTERY; \$2.00 PRICE GUIDE & SUPPLEMENT
.75 POSTAGE/HANDLING; Cal.res.add 6% tax; Sorry, no C.O.D.'s; PRICES ARE NET

IF YOU WOULD LIKE YOUR BOOK(S) AUTOGRAPHED, PLEASE INDICATE

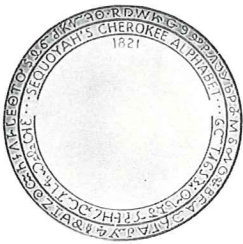
PLEASE DO NOT SEND YOUR ORDERS TO FRANKOMA POTTERY AS THEY ARE NOT SET UP TO HANDLE THEM



SPECIAL STATE & SOUVENIR ITEMS

by Frankoma Pottery, Inc.—Sapulpa, Oklahoma 74066

Available only in Desert Gold, White Sand, Prairie Green and Flame: Add 50% for Flame



7FS—CHEROKEE ALPHABET PLATE



TEX-1—TEXAS STATE PLATE



OK-1—OKLAHOMA PLATE



MO-1—MISSOURI STATE PLATE



K-3—KANSAS STATE PLATE

8 1/2" STATE PLATES—PLATES FOOT DRILLED FOR HANGING



—ROAD RUNNER ASH TRAY



CIR—ROAD RUNNER 12 OZ. MUG



WR-1—WILL ROGERS PLATE



K-1—KANSAS ASH TRAY



461—3 1/2" OKLAHOMA ASH TRAY



459—4 1/2" TEXAS ASH TRAY

NOTE: 461 & 459 AVAILABLE IN ALL COLORS



OKIE MUG 12 OZ.



1CLC—DEMITASSE CRAWFISH CUP



M1LC—CRAWFISH 15 OZ. STEIN



458LC—CRAWFISH ASH TRAY



LCTR—CRAWFISH TRIVET



RGTR—6" ROYAL GORGE TRIVET



K2—KANSAS TRIVET

FRANKOMA POTTERY, INC.
SAPULPA, OKLAHOMA 74066

DATE _____

SHIPPING DATE _____

VIA _____

Store Name _____
Street _____
Address _____

DEPT. NO. _____

TERMS: _____

F.O.B. Sapulpa, Oklahoma

P. O. Box No. _____ Route No. _____ or Highway _____

City _____ State _____ Zip Code _____ Phone _____

Form 103 Rev.

Quantity	Stock No.	C O L O R S									DESCRIPTION	Dozen	Extension
		Black	Green	Gold	Blue	White	Brown	Yellow	Flame				

Order Authorized by, _____